

The Nikon logo is displayed in a large, bold, black, italicized sans-serif font. It is centered on the page. Above the logo is a horizontal bar with a color gradient from purple to green. Below the logo, the title and subtitle are centered.

Firmware Updater for LS-2000/COOLSCAN III

Instruction Manual

Contents

1. Introduction

- 1.1 Overview
- 1.2 Before Running the Updater

2. Running the Updater

- 2.1 Starting the Updater
- 2.2 Beginning the Update
- 2.3 Exiting the Updater
- 2.4 Errors and How to Deal with Them

I. Introduction

I.1 Overview

The LS-2000 firmware update program, LS2000_xxx.exe (Macintosh version LS2000_xxx; “xxx” is a three-digit number giving the firmware version), and the LS-30 firmware update program, COOLSCANIII_xxx.exe, are utilities that update the firmware stored in the flash memory of the LS-2000 or COOLSCAN III. The program code to be written to the LS-2000 and COOLSCAN III is incorporated in “LS2000_xxx.exe” and “COOLSCANIII_xxx.exe” respectively.



Update program icon

I.2 Before Running the Updater

To run the update program, you must have Nikon Scan version 2.0 or later installed on your system and your LS-2000 or COOLSCAN III must be ready for use. Note also that the existing firmware can not be overwritten by an earlier version.

Before running the updater, close any other applications. No operations of any kind, including moving the mouse, should be performed on the host computer while the updater is running. You should also turn off any programs such as screen savers that start after a certain length of time has passed.

Before performing an update, check again to make sure that the power cables for both the scanner and host computer, and the interface cable(s) connecting the two, are firmly in place. After beginning the update, do not turn off the scanner or the host computer until a message appears indicating that the update is complete. You should also be sure not to disconnect the interface cable. Depending on their timing, either of these actions could damage the scanner’s firmware, making further downloads impossible.

The update will take about a minute to finish.



2. Running the Updater

2.1 Starting the Updater

If you are using Windows 95, Windows 98, or Windows NT4.0, select "LS2000_xxx.exe" or "COOLSCANIII_xxx.exe" from the Windows Explorer or by selecting **Run...** from the **Start** menu to start the updater. Macintosh users can start the updater by double-clicking the program icon.

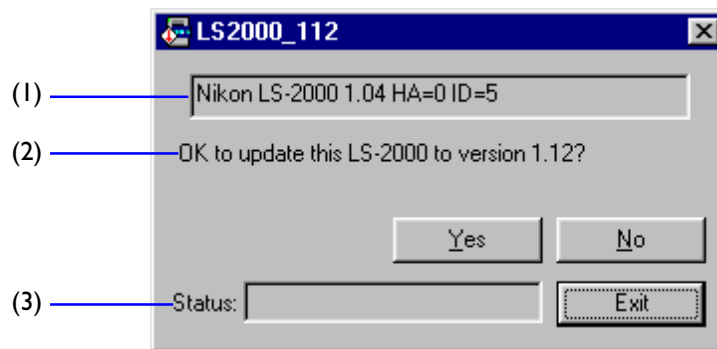
The first dialog displayed after the updater starts is the software license agreement. The license agreement is available in Japanese, English, French, German, and Spanish; the language displayed can be selected from the language menu at lower left. If, after reading the software license agreement, you agree to its terms and conditions, click **Yes**. The updater dialog will then be displayed. If you do not agree to the terms and conditions of the license agreement, click **No**. The program will end without updating the scanner's firmware.

All subsequent dialogs will be displayed in the language selected in the license agreement dialog box.

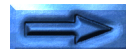
2.2 Beginning the Update

In the explanations that follow, the LS-2000 is used for illustrative purposes unless otherwise noted. The procedures are however the same for the COOLSCAN III. If you are performing an update on a COOLSCAN III scanner, read "COOLSCAN III" for "LS-2000" where appropriate.

The updater begins a scan of the SCSI bus after the main dialog (shown below) is displayed.



- (1) Device name (gives bus information for LS-2000 or COOLSCAN III scanners found on the SCSI bus)
- (2) Message box
- (3) Status (shows operating status)



The items displayed in the device name box are described below.

Nikon LS-2000 1.04 HA:0 ID:5
(1) (2) (3) (4)

- (1) Device name (LS-2000/COOLSCAN III)
- (2) Current firmware version
- (3) Host adapter ID
- (4) Device ID

Once the updater has located an LS-2000 or COOLSCAN III scanner, a message like that shown above will be displayed in the device name box. The version number shown in the message box is the version number of the firmware that will be written to the scanner by the update program.

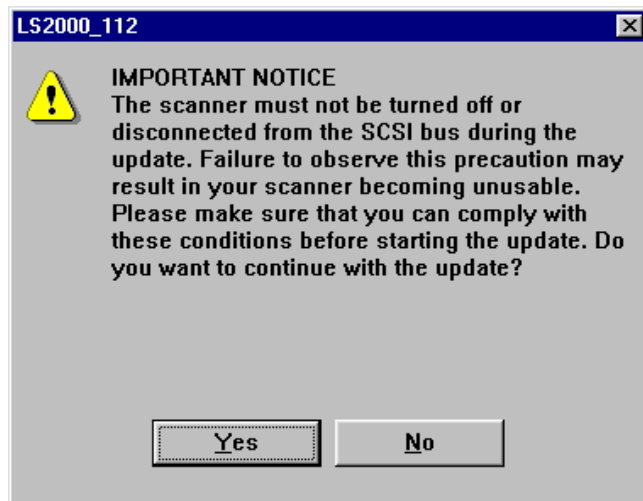
If the message “No LS-2000 connected” is displayed in the message box, the computer is unable to detect an LS-2000 scanner. Restart the updater after making sure that the computer can detect the LS-2000.

Should you attempt to replace the scanner firmware with an earlier version, the message “This LS-2000 does not need to be updated” will be displayed. No update will be performed when the **OK** button is clicked. The updater can not replace firmware with the same or an earlier version number (note that the higher the version number, the later the version).

Once a message has been displayed in the message box, the updater will pause to wait for input. To proceed, click **Yes**, **No**, or **Exit**. The operations performed by each of these buttons are explained below.

Yes

Click **Yes** to perform the update given in the message box on the scanner currently listed in the device name box. The dialog shown below will be displayed.



Clicking **Yes** in this dialog will start the process of replacing the firmware. Clicking **No** will return you to the main dialog.

Note: *As part of this operation, about thirty seconds are needed to load data, followed by another period of approximately thirty seconds to initialize the device. If possible, no other operation, including moving the mouse, should be performed at this time to ensure that the update is performed safely. Before beginning the update, be sure to turn off any programs such as screen savers that would otherwise begin after a certain length of time has passed.*



No

If you have several LS-2000 or COOLSCAN III scanners connected and want to update a device not currently shown in the device name box, click **No**. Another LS-2000 or COOLSCAN III will be selected as the target for the update operation. The message “No additional LS-2000 connected” or “No additional COOLSCAN III connected” indicates that the computer is unable to detect additional LS-2000 or COOLSCAN III scanners.

Exit

Click **Exit** to end the program without performing an update.

The status area

During the update operation, program status is displayed in the status area.

Searching for...: searching for connected devices

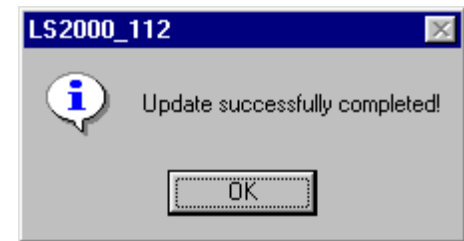
Loading data...: loading data

Initializing...: initializing device

2.3 Exiting the Updater

The dialog shown below is displayed when the update finishes without incident. Clicking **OK** returns you to the main dialog, where the updater will wait for input.

If more than one LS-2000 or COOLSCAN III is connected, another scanner will be selected in the main dialog and the updater will wait for input. Repeat the steps given above to perform additional updates. To exit the program, click **Exit**.



2.4 Errors and How to Deal with Them

If either of the messages below is displayed during an update, follow the steps below.

“Update failed. Try again.”

An error was detected while the firmware was being written to the scanner, and there is a possibility that firmware may not have been copied successfully. Click **OK** to return to the main dialog, where the updater will be ready to attempt another update on the same scanner. Click **Yes** in the main dialog to begin the update.

Should this message appear again, check that the scanner is turned on and that the power and interface cables are not disconnected. In the event that you find that the scanner was off or a cable disconnected, restart the update program after reconnecting the cables, turning the scanner on, and restarting the host computer. (Note that in these circumstances the scanner will not perform the usual initialization process after being turned on, nor will the status LED blink. This does not however indicate a malfunction; the scanner will start in a condition that allows the minimum signals necessary to be passed across the interface.)

If this error occurs on an LS-2000 or COOLSCAN III scanner connected to a Macintosh computer, before performing the update operation a second time, copy the file **MAID Driver HS** from the **Nikon Software:Nikon Scan2.x:Utility** folder to the **Preferences:Nikon MAID** folder in the System folder. If you had been using your scanner with no **MAID Driver HS** file in the **Nikon MAID** folder, delete this file from the **Nikon MAID** folder after exiting the updater.

Should the same error appear after the above steps have been performed, there may be a problem with your scanner. Contact your Nikon service representative. Have the numerical code that appeared in the dialog to hand so that our service representative will be able to identify the problem.

“Failed to initialize device.”

Although the firmware was successfully copied to the scanner, the program failed to initialize the device. Re-initialize the scanner by turning it off and then on again. Note that the scanner may not initialize normally when the FH-2 strip-film holder is in place in the MA-20 adapter. In this case you should remove the FH-2 before turning the scanner off and on. The device may also fail to initialize normally if any of the adapters is not inserted properly. Either insert the adapter fully or remove the adapter before turning the scanner off and on.

If initialization does not complete after you have turned the scanner off and on, this may indicate a problem with the device. Contact your Nikon service representative.